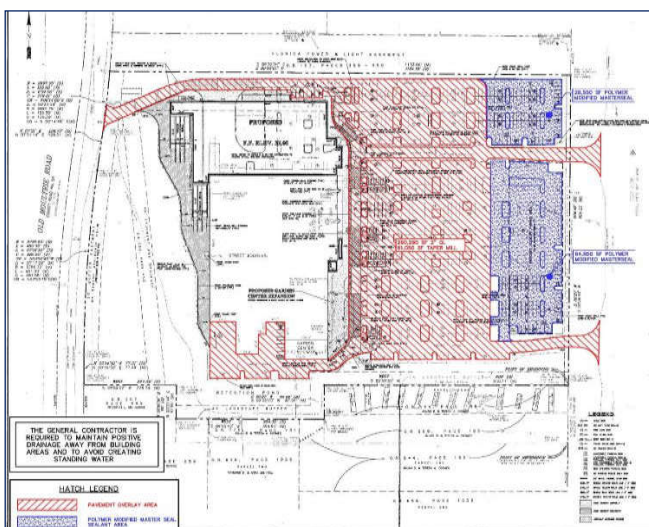
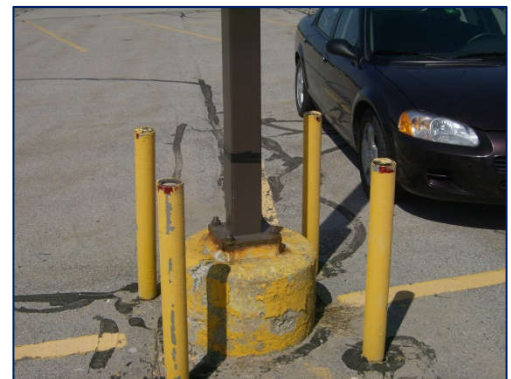


Pavement Infrastructure Evaluations and Maintenance Plans

Sewall is very familiar with infrastructure and pavement management, planning, evaluation, and maintenance for residential, commercial, and government developments. We use our experience to advise our clients on sustainable pavement systems and long term rehabilitation strategies. In the past fifteen years, Sewall has completed on-site infrastructure evaluations of over 750 different facilities, including private developments, retail shopping centers, and military sites. With this experience, Sewall has several engineers and trained technicians (including three survey crews) who are familiar with performing pavement and ADA accessibility compliance evaluations. We are familiar with ASTM D6433 Standard Practice for Roads and Parking Lots, Paser pavement condition rating system, pavement preservation curve methodology, ADA and ADAAG Accessible Disability Guidelines. Sewall also utilizes MicroPaver software loaded onto field tablets to collect site data to determine Pavement Condition Index (PCI). This is used to help our clients rate the condition of multiple parking facilities to assist in prioritizing and shaping multi-year maintenance plans for future repairs.



We also provide pavement marking, striping, traffic, drainage, and signage improvement plans for a number of clients and homeowners associations, including leading national retail chains throughout the United States. Sewall also creates bid-ready documents which can be sent out to contractors for competitive pricing.